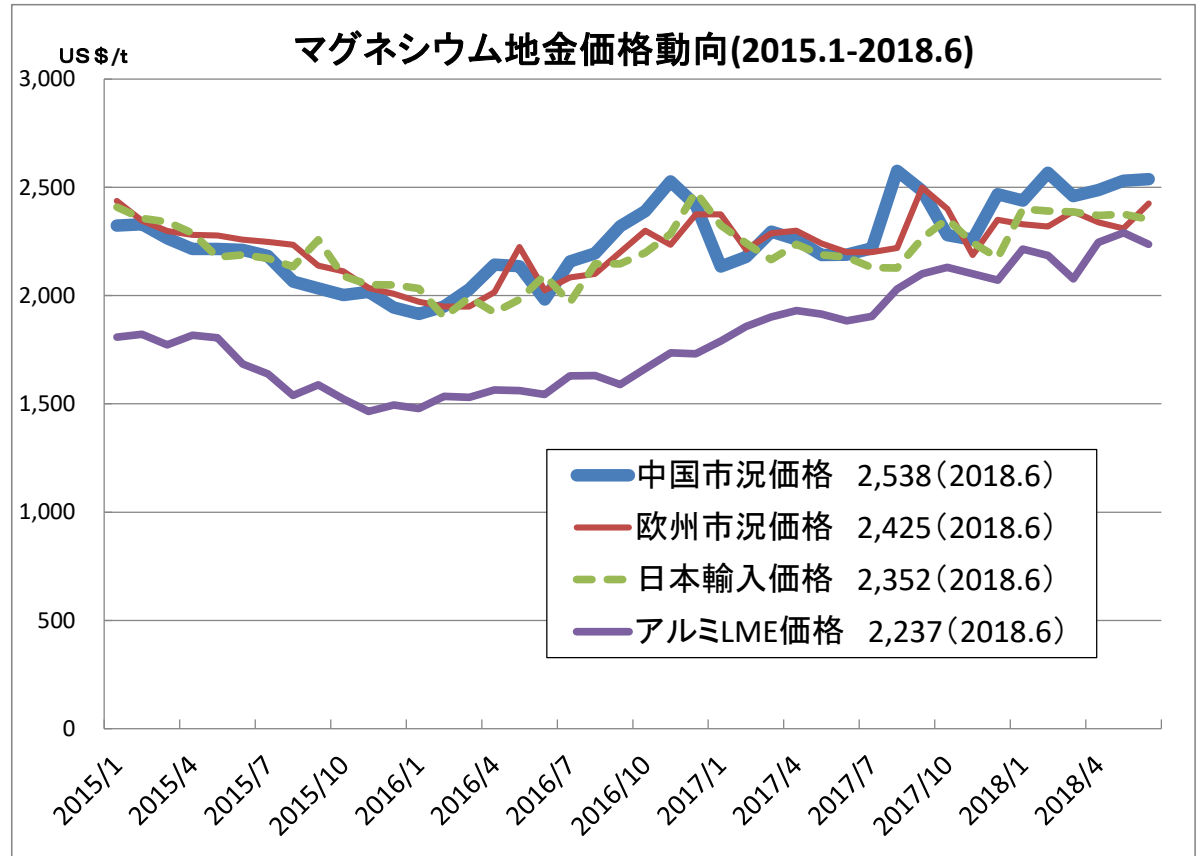


マグネシウム地金価格動向推移

| | (USD/t) | (USD/t) | (USD/t) | (USD/t) |
|---------|---------|---------|---------|---------|
| 年月 | 中国 | 欧州 | 日本輸入 | アルミ |
| 2009/1 | 2,858 | 2,883 | 3,072 | 1,413 |
| 2009/2 | 2,875 | 2,825 | 3,249 | 1,330 |
| 2009/3 | 2,715 | 2,716 | 3,317 | 1,336 |
| 2009/4 | 2,703 | 2,725 | 3,027 | 1,421 |
| 2009/5 | 2,629 | 2,669 | 2,790 | 1,460 |
| 2009/6 | 2,554 | 2,654 | 2,752 | 1,574 |
| 2009/7 | 2,530 | 2,582 | 2,687 | 1,668 |
| 2009/8 | 2,708 | 2,694 | 2,700 | 1,934 |
| 2009/9 | 2,718 | 2,773 | 2,743 | 1,834 |
| 2009/10 | 2,675 | 2,742 | 2,802 | 1,879 |
| 2009/11 | 2,675 | 2,725 | 2,667 | 1,949 |
| 2009/12 | 2,713 | 2,725 | 2,806 | 2,180 |
| 2010/1 | 2,764 | 2,747 | 2,761 | 2,235 |
| 2010/2 | 2,725 | 2,775 | 2,892 | 2,048 |
| 2010/3 | 2,711 | 2,814 | 2,788 | 2,206 |
| 2010/4 | 2,761 | 2,836 | 2,784 | 2,317 |
| 2010/5 | 2,790 | 2,884 | 2,804 | 2,041 |
| 2010/6 | 2,790 | 2,888 | 2,818 | 1,931 |
| 2010/7 | 2,751 | 2,888 | 2,838 | 1,988 |
| 2010/8 | 2,752 | 2,888 | 2,845 | 2,118 |
| 2010/9 | 2,862 | 2,935 | 2,815 | 2,162 |
| 2010/10 | 3,034 | 3,125 | 2,958 | 2,347 |
| 2010/11 | 3,187 | 3,125 | 3,040 | 2,333 |
| 2010/12 | 2,954 | 3,125 | 3,354 | 2,351 |
| 2011/1 | 2,938 | 3,041 | 3,097 | 2,440 |
| 2011/2 | 2,971 | 2,900 | 3,076 | 2,508 |
| 2011/3 | 3,019 | 3,025 | 3,084 | 2,553 |
| 2011/4 | 3,186 | 3,025 | 3,083 | 2,663 |
| 2011/5 | 3,209 | 3,222 | 3,203 | 2,592 |
| 2011/6 | 3,161 | 3,206 | 3,201 | 2,555 |
| 2011/7 | 3,170 | 3,150 | 3,251 | 2,512 |
| 2011/8 | 3,222 | 3,150 | 3,284 | 2,393 |
| 2011/9 | 3,253 | 3,150 | 3,272 | 2,297 |
| 2011/10 | 3,188 | 3,150 | 3,318 | 2,172 |
| 2011/11 | 3,028 | 3,150 | 3,256 | 2,074 |
| 2011/12 | 3,000 | 3,150 | 3,271 | 2,022 |
| 2012/1 | 3,000 | 3,150 | 3,082 | 2,144 |
| 2012/2 | 2,947 | 3,150 | 3,060 | 2,204 |
| 2012/3 | 2,972 | 3,150 | 2,993 | 2,183 |
| 2012/4 | 2,931 | 3,163 | 3,088 | 2,047 |
| 2012/5 | 3,119 | 3,250 | 3,090 | 2,000 |
| 2012/6 | 3,082 | 3,242 | 3,153 | 1,885 |
| 2012/7 | 3,113 | 3,203 | 3,148 | 1,874 |
| 2012/8 | 3,210 | 3,200 | 3,164 | 1,838 |
| 2012/9 | 3,219 | 3,206 | 3,269 | 2,054 |
| 2012/10 | 3,206 | 3,250 | 3,281 | 1,975 |
| 2012/11 | 3,233 | 3,250 | 3,283 | 1,943 |
| 2012/12 | 3,213 | 3,250 | 3,256 | 2,087 |
| 2013/1 | 3,039 | 3,111 | 3,010 | 2,038 |
| 2013/2 | 2,841 | 3,025 | 2,923 | 2,053 |
| 2013/3 | 2,825 | 2,950 | 2,890 | 1,913 |
| 2013/4 | 2,835 | 2,950 | 2,863 | 1,857 |
| 2013/5 | 2,785 | 2,940 | 2,820 | 1,831 |
| 2013/6 | 2,775 | 2,850 | 2,809 | 1,816 |
| 2013/7 | 2,693 | 2,783 | 2,680 | 1,768 |
| 2013/8 | 2,746 | 2,761 | 2,643 | 1,815 |
| 2013/9 | 2,661 | 2,850 | 2,758 | 1,760 |
| 2013/10 | 2,616 | 2,850 | 2,668 | 1,812 |
| 2013/11 | 2,644 | 2,850 | 2,650 | 1,749 |
| 2013/12 | 2,642 | 2,850 | 2,641 | 1,739 |

| | (USD/t) | (USD/t) | (USD/t) | (USD/t) |
|---------|---------|---------|---------|---------|
| 年月 | 中国 | 欧州 | 日本輸入 | アルミ |
| 2014/1 | 2,626 | 2,845 | 2,678 | 1,726 |
| 2014/2 | 2,620 | 2,800 | 2,666 | 1,694 |
| 2014/3 | 2,579 | 2,739 | 2,675 | 1,704 |
| 2014/4 | 2,530 | 2,725 | 2,543 | 1,847 |
| 2014/5 | 2,542 | 2,675 | 2,552 | 1,791 |
| 2014/6 | 2,506 | 2,675 | 2,602 | 1,869 |
| 2014/7 | 2,515 | 2,675 | 2,584 | 1,945 |
| 2014/8 | 2,480 | 2,669 | 2,501 | 2,030 |
| 2014/9 | 2,457 | 2,600 | 2,516 | 1,992 |
| 2014/10 | 2,475 | 2,585 | 2,500 | 1,938 |
| 2014/11 | 2,409 | 2,535 | 2,461 | 2,054 |
| 2014/12 | 2,340 | 2,520 | 2,439 | 1,913 |
| 2015/1 | 2,324 | 2,438 | 2,408 | 1,808 |
| 2015/2 | 2,330 | 2,346 | 2,357 | 1,821 |
| 2015/3 | 2,265 | 2,298 | 2,341 | 1,773 |
| 2015/4 | 2,215 | 2,280 | 2,288 | 1,817 |
| 2015/5 | 2,215 | 2,277 | 2,178 | 1,805 |
| 2015/6 | 2,211 | 2,259 | 2,188 | 1,683 |
| 2015/7 | 2,183 | 2,248 | 2,172 | 1,638 |
| 2015/8 | 2,065 | 2,234 | 2,133 | 1,540 |
| 2015/9 | 2,033 | 2,138 | 2,257 | 1,588 |
| 2015/10 | 2,002 | 2,112 | 2,091 | 1,523 |
| 2015/11 | 2,018 | 2,035 | 2,051 | 1,466 |
| 2015/12 | 1,945 | 2,009 | 2,049 | 1,494 |
| 2016/1 | 1,916 | 1,971 | 2,033 | 1,479 |
| 2016/2 | 1,950 | 1,950 | 1,902 | 1,535 |
| 2016/3 | 2,029 | 1,950 | 1,991 | 1,530 |
| 2016/4 | 2,143 | 2,016 | 1,923 | 1,564 |
| 2016/5 | 2,136 | 2,225 | 1,983 | 1,561 |
| 2016/6 | 1,982 | 2,025 | 2,094 | 1,544 |
| 2016/7 | 2,158 | 2,084 | 1,968 | 1,630 |
| 2016/8 | 2,195 | 2,100 | 2,146 | 1,630 |
| 2016/9 | 2,320 | 2,200 | 2,147 | 1,590 |
| 2016/10 | 2,390 | 2,300 | 2,199 | 1,664 |
| 2016/11 | 2,527 | 2,235 | 2,286 | 1,735 |
| 2016/12 | 2,418 | 2,375 | 2,479 | 1,731 |
| 2017/1 | 2,134 | 2,375 | 2,325 | 1,791 |
| 2017/2 | 2,178 | 2,213 | 2,242 | 1,857 |
| 2017/3 | 2,296 | 2,288 | 2,166 | 1,902 |
| 2017/4 | 2,260 | 2,300 | 2,236 | 1,931 |
| 2017/5 | 2,187 | 2,240 | 2,188 | 1,914 |
| 2017/6 | 2,189 | 2,200 | 2,177 | 1,884 |
| 2017/7 | 2,218 | 2,200 | 2,129 | 1,904 |
| 2017/8 | 2,577 | 2,220 | 2,128 | 2,030 |
| 2017/9 | 2,484 | 2,500 | 2,265 | 2,100 |
| 2017/10 | 2,279 | 2,400 | 2,354 | 2,130 |
| 2017/11 | 2,258 | 2,188 | 2,245 | 2,101 |
| 2017/12 | 2,469 | 2,350 | 2,175 | 2,071 |
| 2018/1 | 2,439 | 2,330 | 2,400 | 2,215 |
| 2018/2 | 2,568 | 2,319 | 2,391 | 2,185 |
| 2018/3 | 2,460 | 2,388 | 2,387 | 2,077 |
| 2018/4 | 2,488 | 2,338 | 2,371 | 2,246 |
| 2018/5 | 2,530 | 2,310 | 2,375 | 2,291 |
| 2018/6 | 2,538 | 2,425 | 2,352 | 2,237 |
| 2018/7 | | | | |
| 2018/8 | | | | |
| 2018/9 | | | | |
| 2018/10 | | | | |
| 2018/11 | | | | |
| 2018/12 | | | | |



中国、欧州の2016.7まではMetal Bulletin、2016.8からはAntaika発表の数値から
 ※日本の価格・為替レートは財務省通関統計から引用(純マグネシウムの価格)
 ※アルミニウムの価格はLMEの価格を参照